

## Visitor Information

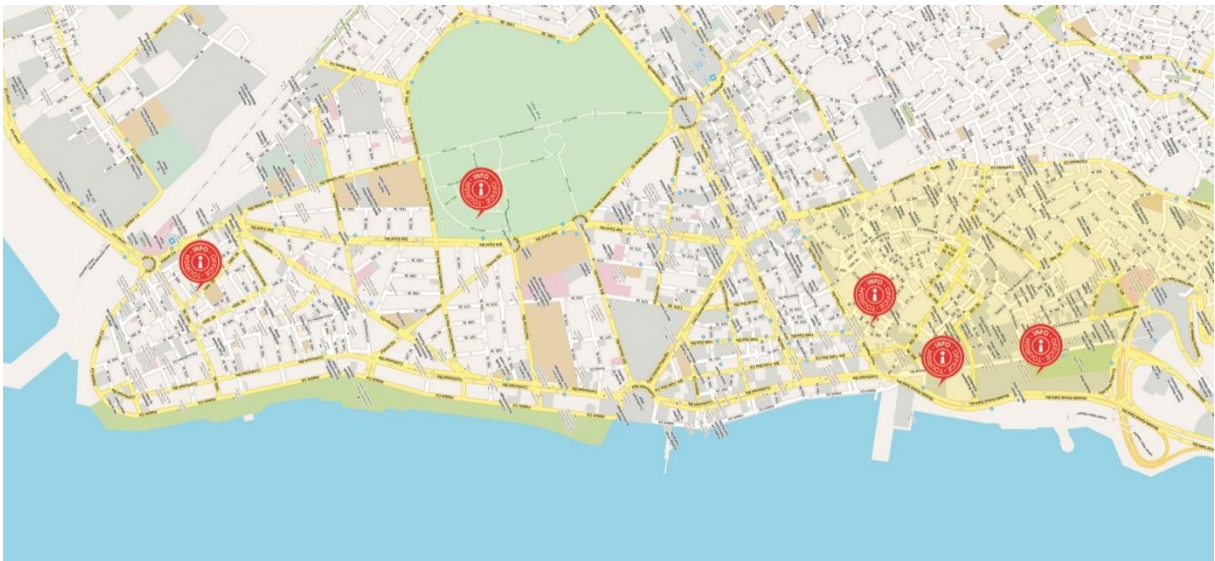
### TOURISM INFORMATION OFFICES



İzmir Tourism Information Offices welcome local and foreign tourists who also are guided about the city.

The opening hours of İzmir Tourist Information Offices 2022:

- 1. İzmir Cinema Office and Alsancak Tourism Information Office:**  
Monday to Friday 8:30 AM – 5:30 PM  
Closed on Public Holidays and Weekends
- 2. Kültürpark Tourism Information Office and Exhibition Area - Pakistan Pavilion:**  
Monday to Friday 8:30 AM – 5:30 PM  
Saturday & Sunday 9:00 AM – 5:00 PM  
Closed on Public Holidays
- 3. Hisarönü Tourism Information Office**  
Monday to Friday 8:30 AM – 5:30 PM  
Saturday 9:00 AM – 5:00 PM  
Closed on Public Holidays and Sunday
- 4. Konak Tourism Information Office**  
Monday to Friday 8:30 AM – 5:30 PM  
Saturday & Sunday 9:00 AM – 5:00 PM  
Closed on Public Holidays
- 5. Kemeraltı Information Point**  
Monday to Friday 10:00 AM – 5:00 PM  
Closed on Public Holidays and Weekends
- 6. Kemeraltı Information Office**  
Monday to Friday 8:30 AM – 5:30 PM  
Closed on Public Holidays and Weekends

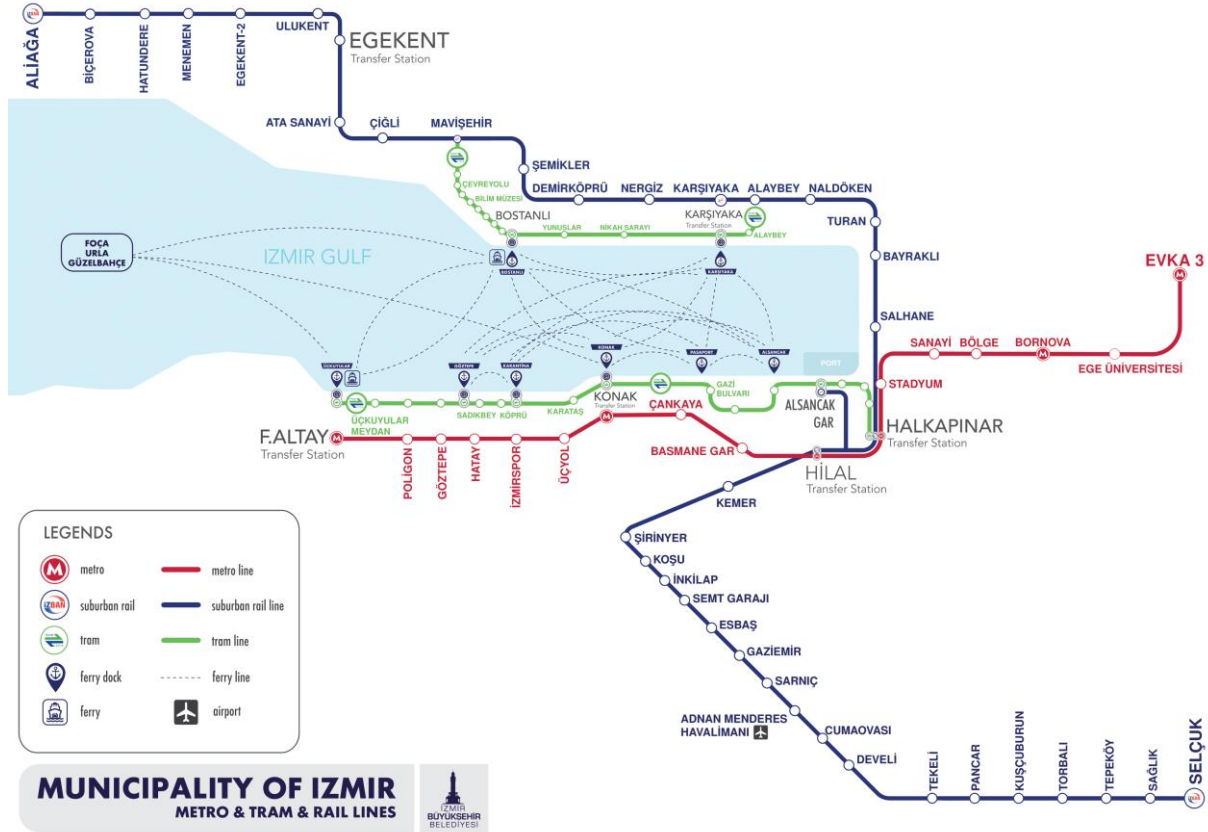


## TRANSPORTATION IN İZMİR



Izmir Metropolitan Municipality provides complete transportation services with a tram-bus-ferry-subway-suburban train network. In İzmir, you can use the “İzmirim” electronic card and Bilet35, which is a ticket that can be used for 3, 5 and 10 trips, for benefiting from public transportation and some municipal services. You can use your contactless VISA credit or debit cards for public transportation in İzmir. By using a free wifi network (WizmirNET) offered throughout İzmir, you can also access intercity public transportation information on Google Maps.

[izum.izmir.bel.tr](http://izum.izmir.bel.tr)



### 1. Bus (ESHOT)

There are subway, suburban train, ferry, tram, and airport connections of the buses, which have the opportunity to reach every district and neighborhood. Some bus services offer a free wireless internet service called WizmirNET. You can go to İzmir Intercity Bus Station by ESHOT bus.

### 2. Suburban Train (İZBAN)

The Suburban Train line has a 41-station and 136 km long railway network traveling from Aliğa in the north of the city to Selçuk in the south. Suburban stops are transit with other public transportation options and it is possible to reach everywhere with the transfer system. Alsancak Gar is one of the central stations and it provides access to the suburban train line in both directions. You can walk to Kordonboyu and İzmir Port from Alsancak Station.

### 3. Subway (İZMİR METRO)

İzmir subway line provides easy access to İzmir city center, which currently has a total of 17 stations. To facilitate access to the subway stations, there are escalators and elevators for the disabled and the elderly, support systems for the blind and deaf, and wheelchair charging units at the stations. You can reach the old settlements of İzmir from the Basmane Subway Station, located next to the historical Basmane Train Station. Konak Subway Station is located in the city center and near the Clock Tower. You can go to the Old Kemeraltı Bazaar from Çankaya and Konak Subway Stations.

### 4. Tram (İZMİR TRAM)

İzmir tram consists of two lines, the Konak tram line and the Karşıyaka tram line. Generally, the lines passing through the coastline and the city center provide access to the city's most important locations. Karşıyaka tram line provides public transportation to Karşıyaka - Mavişehir region. Konak tram departs from Halkapınar and reaches Üçkuyular via the Alsancak-Çankaya-Konak line, which is the heart of the city. You can easily go to Kıbrıs Şehitleri Street from Hocazade Mosque Station.

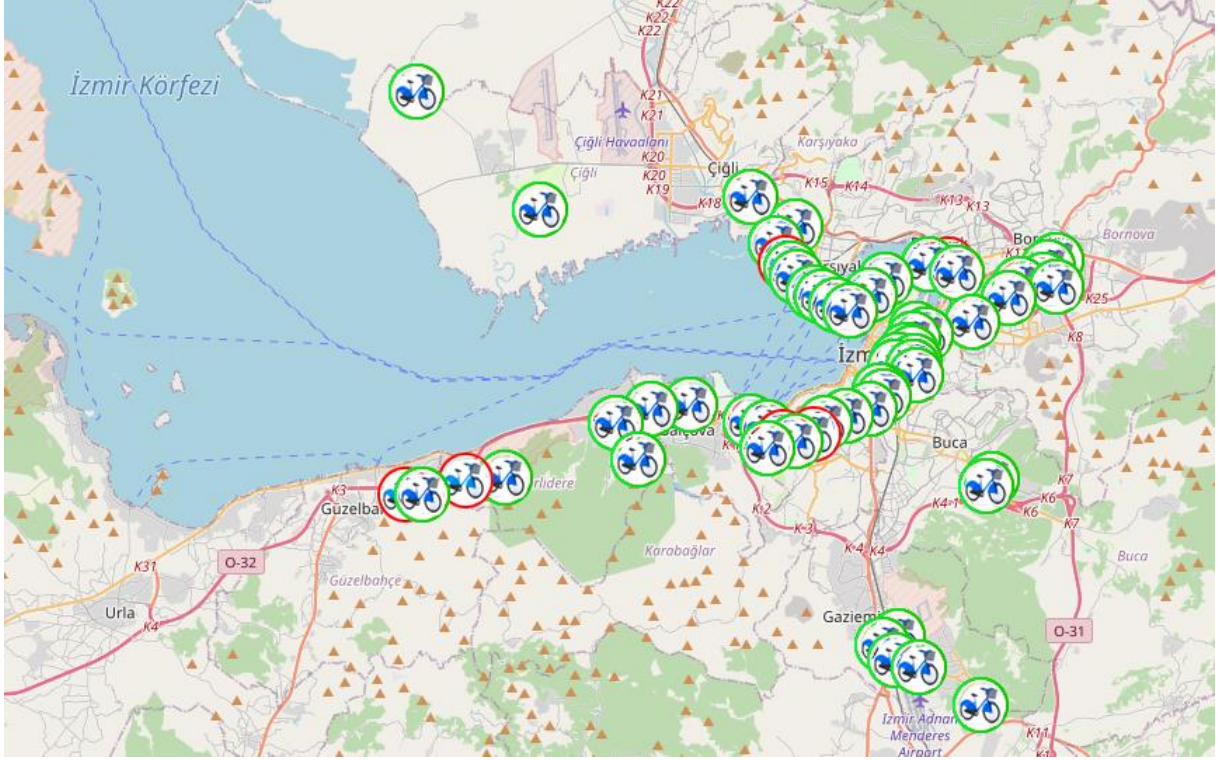
### 5. Ferry (İZDENİZ)

Ferry is one of the widely used public transportation options in İzmir. Bostanlı, Karşıyaka, Alsancak, Pasaport, Konak, Karantina, Göztepe and Üçkuyular ferry terminals are the main terminals used for urban transportation. Ferries travel between Foça - Karşıyaka located in the north of İzmir Gulf and Mordoğan - Urla - Güzelbahçe - Üçkuyular - Göztepe - Karantina – Konak – Pasaport - Alsancak located in the south of gulf. Ferryboats are available from Üçkuyular and Bostanlı ferry terminals. Foça, Mordoğan and Urla are sea tourism destinations for this reason ferry services can be rare and seasonal.

### 6. Bicycle Rental System (BİSİM)

Another service of İzmir Metropolitan Municipality, the bicycle rental system Bisim, provides service at hundreds of points with stations and parking points along the coastline stretching from Sahilevleri to İzmir Bird Paradise. It is possible to reach some parts of the city by renting a bicycle and using the bicycle paths. Bicycles can be rented from the bicycle parking units at certain points of the city, by following the instructions on the bicycle kiosk screen, with a credit card, or with İzmirimKart.

[www.bisim.com.tr](http://www.bisim.com.tr)



## 1. Electric Scooters

You can also prefer electric scooters, which are found all over the city in İzmir, as a means of transportation. You can rent electric scooters download mobile applications to your phone and pay with a credit card.

## İZMİRİM CARD

- İzmirim Card is a payment card that incorporates many services of the İzmir Metropolitan Municipality, especially public transportation, within the scope of the "City Card Project".
- İzmirim Card is useable for boarding at subway and suburban stations, ferry piers and all buses.
- In addition, payments can be made by this card for many services such as Bisim, Cable Car, Entrance of İzmir Wild Life Park, Ice Rink in Aşık Veysel Recreation Area and Smart Toilets.

Ticket Offices to buy İzmirim Card,

You can get it from the toll booths in the subway stations or from all points where you can refill for İzmirim Card.

Also, İzmirim Card can be refilled online with a credit card or a debit card suitable for a credit card.

[online.izmirimkart.com.tr/giris](https://online.izmirimkart.com.tr/giris)

## TRANSPORTATION TO DISTRICTS

- **Bergama:** You can go from İzmir to Bergama district center by İZBAN train and get off at Aliğa station after that take the bus or minibus to get to Bergama. When you reach there it will be easy to go to the Acropolis by taxi or a short cable car ride. Pergamon Ancient City (Acropolis), Asclepieion and Red Hall are located in Bergama.
- **Selçuk(Efes):** You can take a minibus to Selçuk from İzmir intercity bus terminal (İZOTAŞ) in Bornova or the local terminal in Gaziemir. In addition, you can take the İZBAN train or the İzmir-Denizli train to go to Selçuk station. Ephesus Ancient City, House of the Virgin Mary, Temple of Artemis and Şirince are located in Selçuk.
- **Çeşme:** You can take Havas bus from the airport to Çeşme and Alaçatı. In addition, Çeşme buses departing from Üçkuyular are also available.
- **Foça:** You can take the İZBAN train and get off at Hatundere Station after that you can go to Foça town center by Eshot bus.
- **Urla/Seferihisar:** You can go to the district center by taking the minibusses which depart from Üçkuyular. Another option is taking the Eshot bus there. Teos Ancient City is located in Sığacık, Seferihisar.

## REACHING US IS VERY EASY



Emergency Call Center (*Emergency Rescue Health Project (traffic accidents, fires, natural disasters and life-saving) / Medical emergency / Ambulance / Police / Coastguard / Forest Fires*): **112**

Citizen Communication Center: **444 40 35**

İzmir Metropolitan Municipality: **0 232 293 12 00**

İzmir Provincial Directorate of Culture and Tourism: **0 232 483 62 16**

Central Tourist Information Office: **0 232 445 73 90**

Adnan Menderes Airport Tourism Information: **0 232 274 22 14**

Bergama Tourism Information: **0 232 631 28 51**

Çeşme Tourism Information: **0 232 712 66 53**

Foça Tourism Information: **0 232 812 12 22**

Selçuk Tourism Information: **0 232 892 69 45**

Adnan Menderes Airport: **0 232 455 00 00**

## GENERAL CONSULATES



- İzmir Consulate General of the Federal Republic of Germany  
**Phone:** +90 232 488 88 88
- İzmir Consulate General of the Republic of Greece  
**Phone:** +90 232 421 69 92, 464 31 60
- İzmir Consulate General of the Republic of Romania

**Phone:** +90 232 465 04 63

- İzmir Consulate General of the Republic of Turkish Republic of Northern Cyprus

**Phone:** +90 232 489 77 89 - 489 49 14

[www.izmir.bel.tr/en/Consulates/2149](http://www.izmir.bel.tr/en/Consulates/2149)

**DIRECT İZMİR** 

Direct İzmir project promotes direct flights from İzmir to the world and from the world to İzmir and shows users all the cities they can fly directly from İzmir to a single address. You can visit the website for detailed information.

[www.directizmir.com](http://www.directizmir.com)